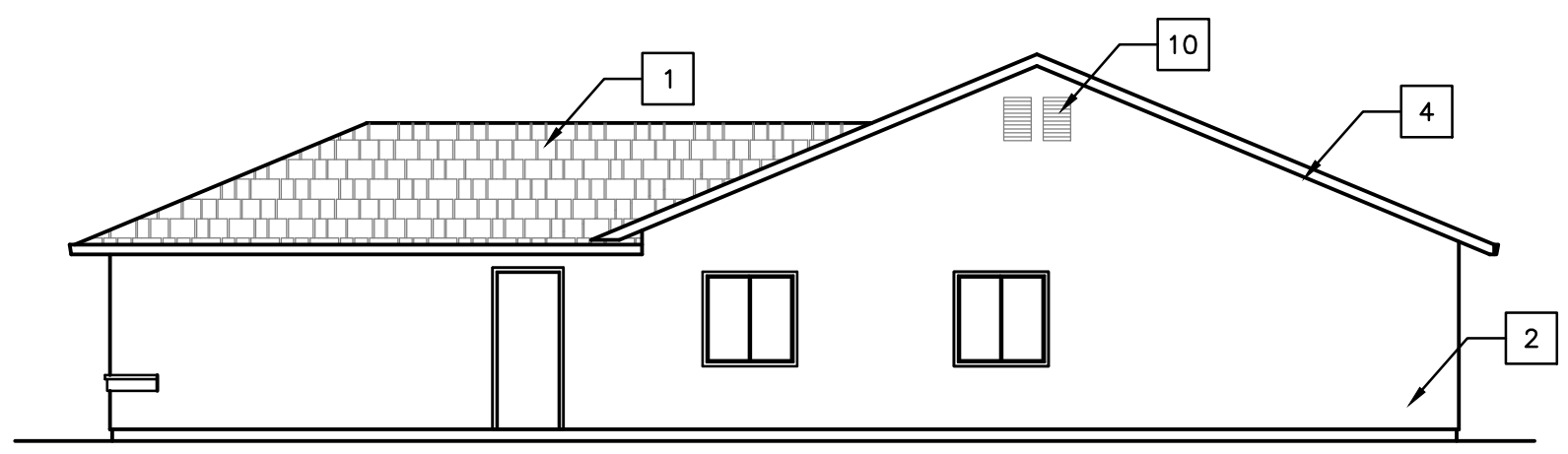
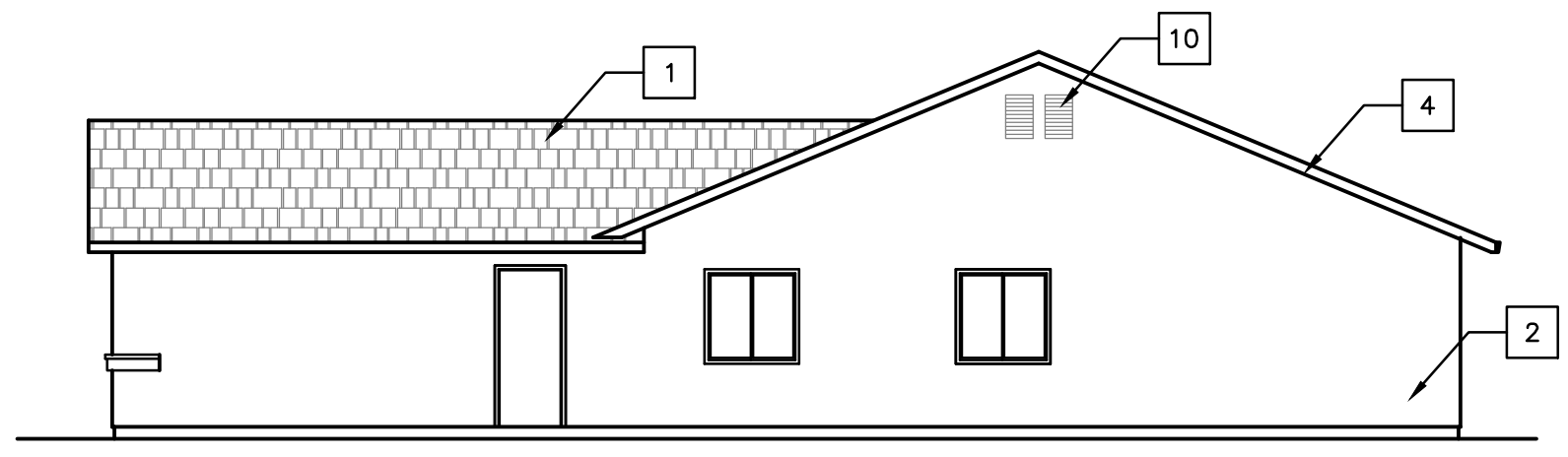


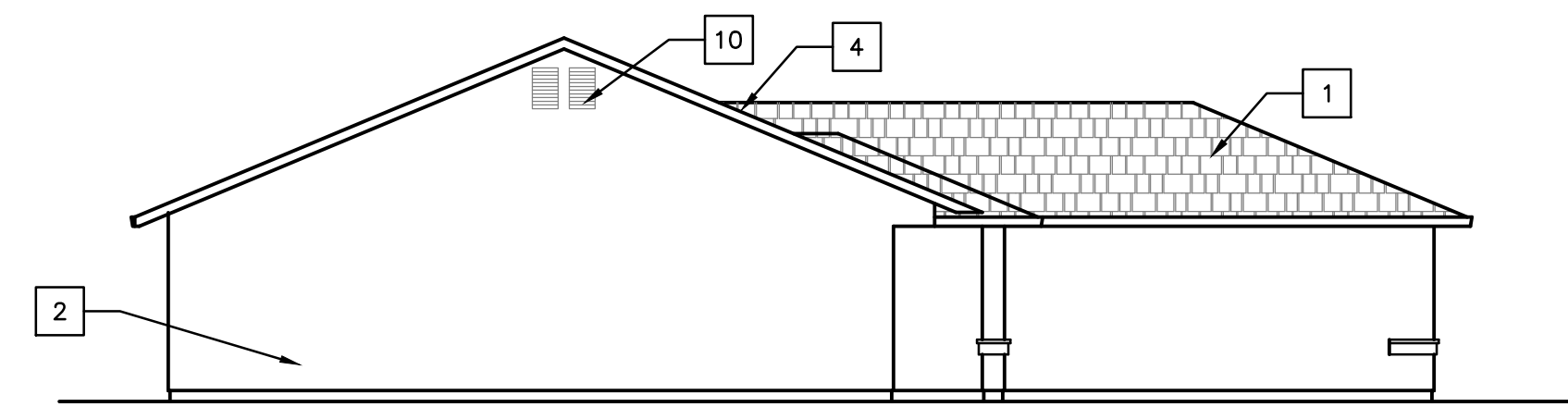
BACK ELEVATION



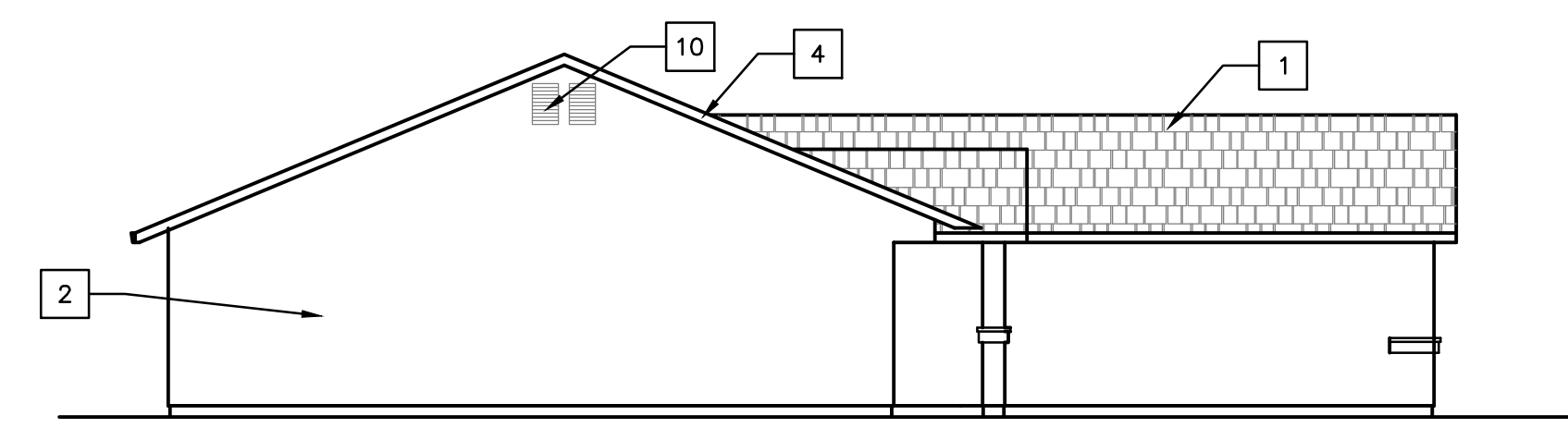
RIGHT ELEVATION "A"



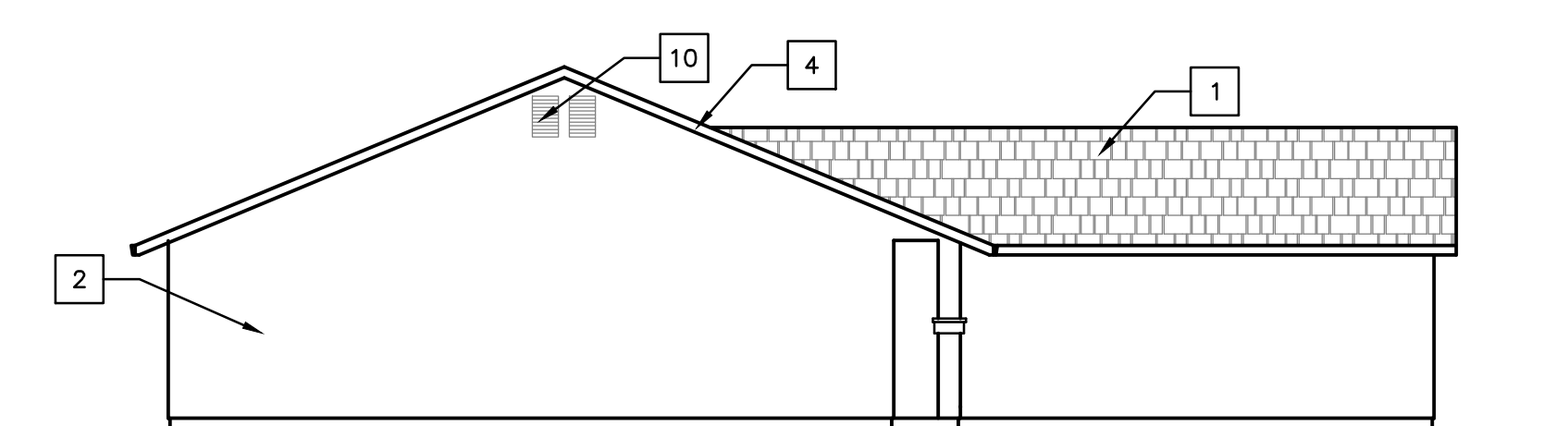
RIGHT ELEVATION "B" & "C"



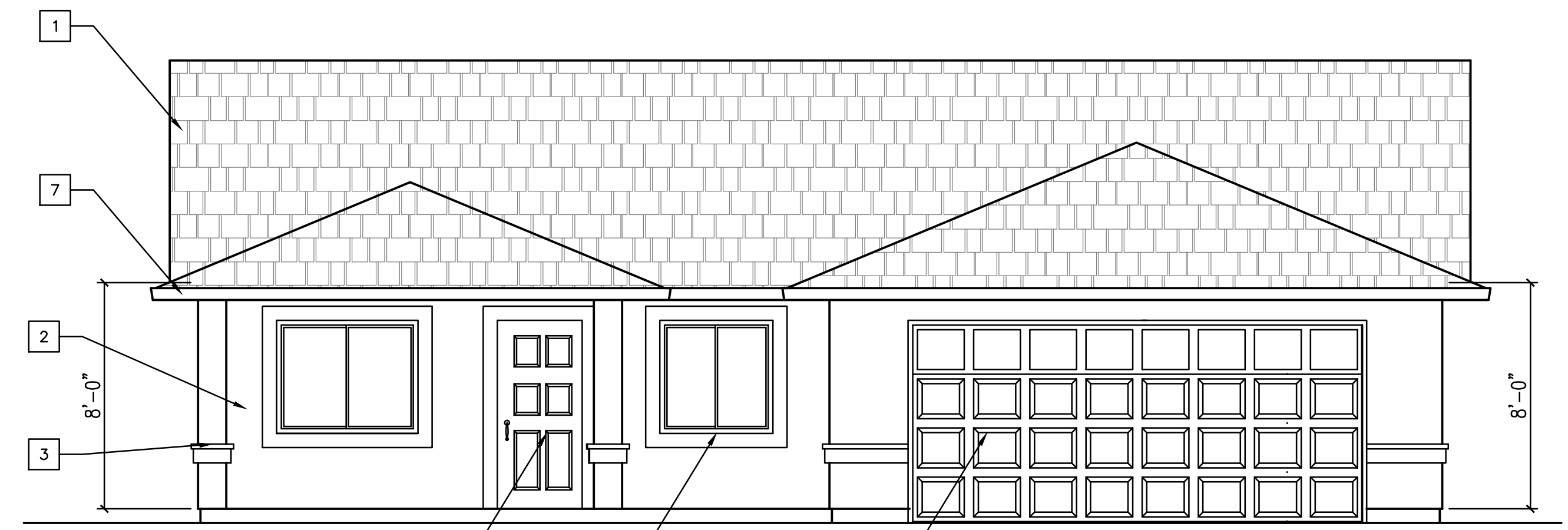
LEFT ELEVATION "A"



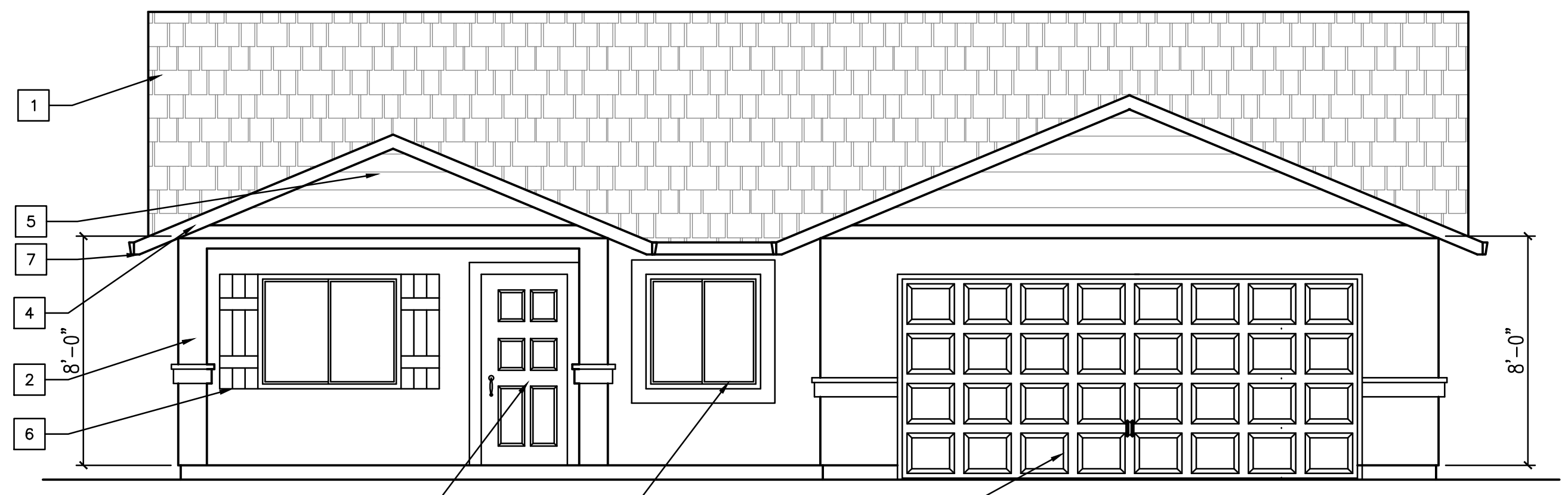
LEFT ELEVATION "B"



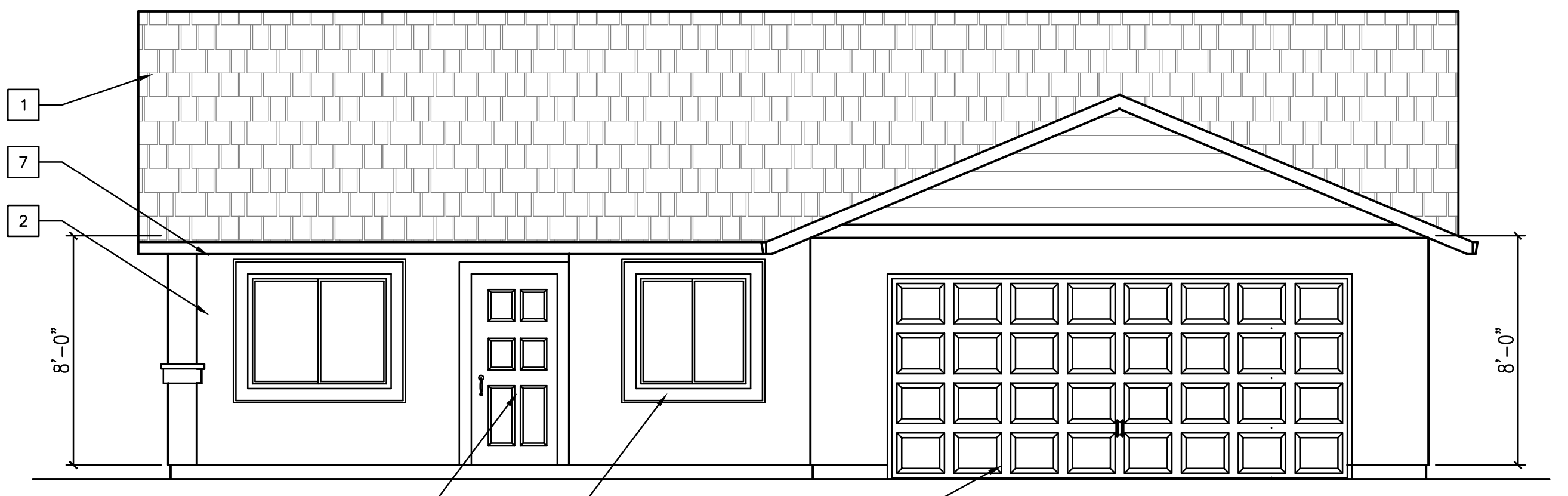
LEFT ELEVATION "C"



FRONT ELEVATION "A"



FRONT ELEVATION "B"



FRONT ELEVATION "C"

EXTERIOR ELEVATION KEYNOTES

1. ROOFING TO BE CONCRETE TILE, ALL ELEVATIONS. SEE ROOF PLAN FOR SLOPES
2. EXTERIOR WALL FINISH TO BE EITHER: A TESTED AND APPROVED ONE COAT CEMENT PLASTER SYSTEM, OR TESTED AND APPROVED THREE COAT CEMENT PLASTER SYSTEM, ON ALL ELEVATIONS (UNLESS NOTED OTHERWISE), PROVIDE WEEP SCREED AT THE BASE OF ALL PLASTER. SEE DETAILS 1 AND 2/D1
3. TRIM WITH CEMENT PLASTER FINISH
4. 2 X 8 BARGE TYPICAL AT GABLES
5. LAP SIDING
6. SHUTTERS
7. 7" CONTINUOUS GUTTER, TYPICAL AT ENDS OF ALL EAVES
8. WINDOW-SEE FLOOR PLAN, AND DETAIL 4/D1
9. GARAGE DOOR - STYLE VARIES.
10. 18" X 24" GABLE VENTS
11. DOOR - SEE FLOOR PLAN AND DETAIL 5/D1

GENERAL NOTES

- A. FRONT ELEVATIONS ARE 1/4" = 1'-0", SIDE AND BACK ELEVATIONS ARE 1/8" = 1'-0"
- B. ALL TRIM ELEMENTS ARE OPTIONAL.

REVISIONS

| | |
|---|--|
| 1 | |
| 2 | |
| 3 | |
| 4 | |

ELEVATIONS
 CUSTOM RESIDENCE FOR:
 HABITAT FOR HUMANITY

DATE: 1/19/16

SCALE: 1/4"=1'0"

DRAWN BY: A.S.

JOB NO.: 15-129

SHEET NO.:

A2

SHEET 5 OF 12