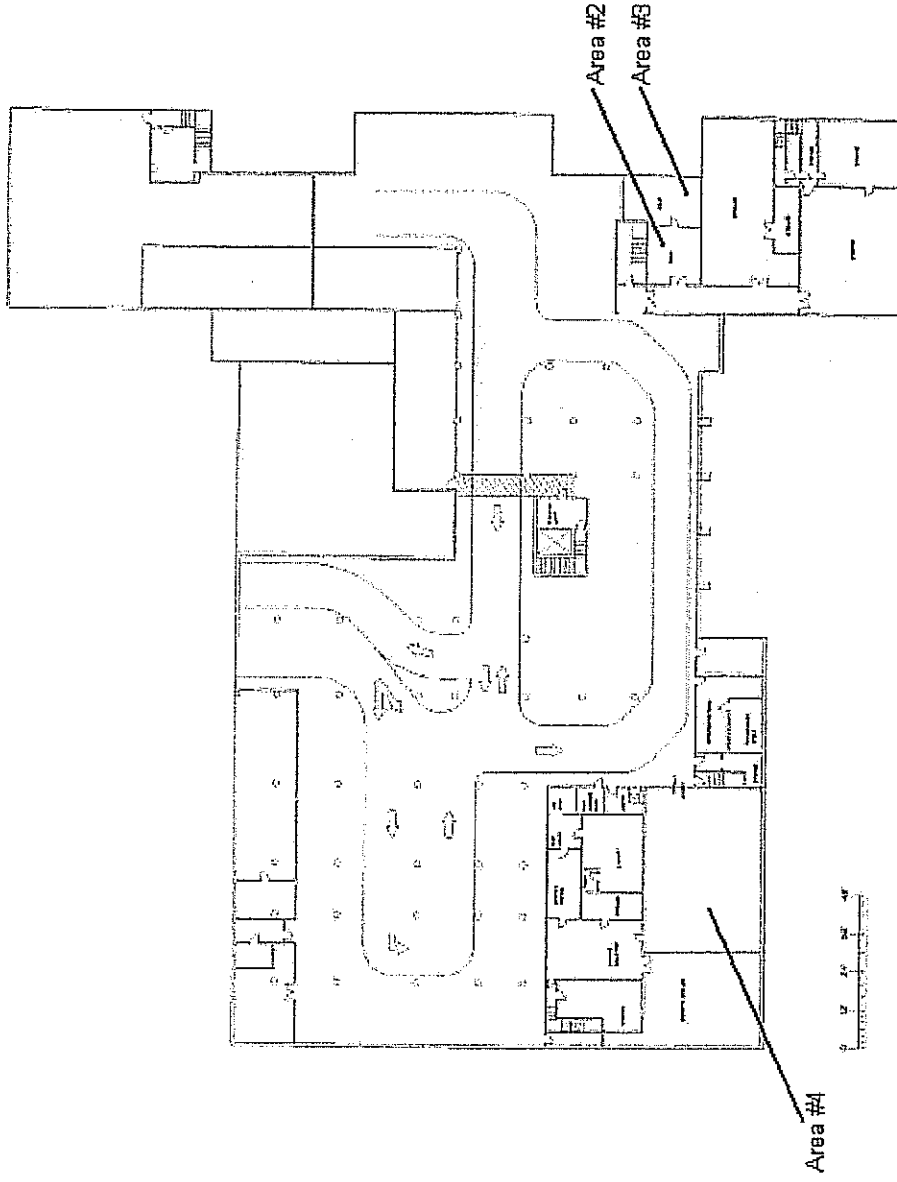


Basement



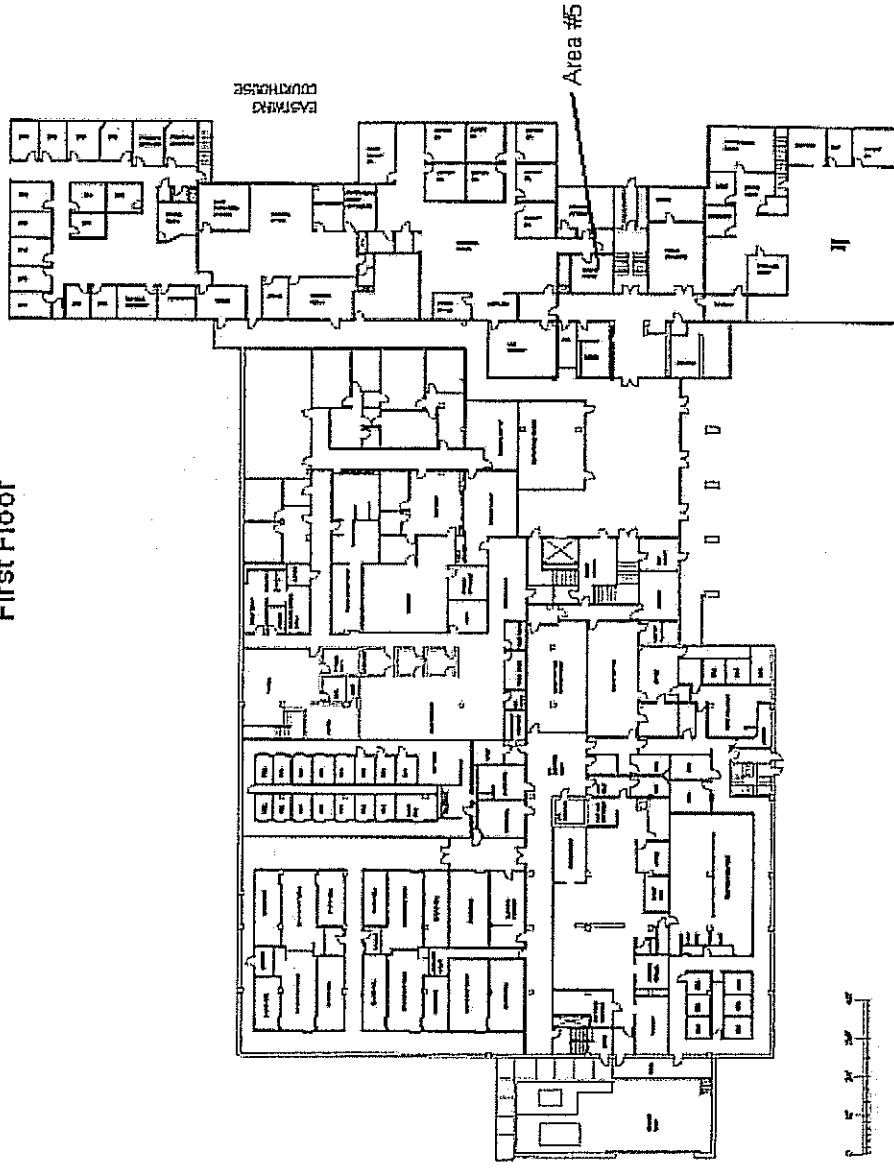
County of Yuba
Yuba County Courthouse
215 5th Street
Marysville, CA 95901

Entek Consulting Group, Inc.
4200 Rocklin Road, Suite 7
Rocklin, California 95677
Project Number 09-1440

Areas 1-11 Inspected
by Douglas R. Colley on December 11, 2009
Map Not to Scale



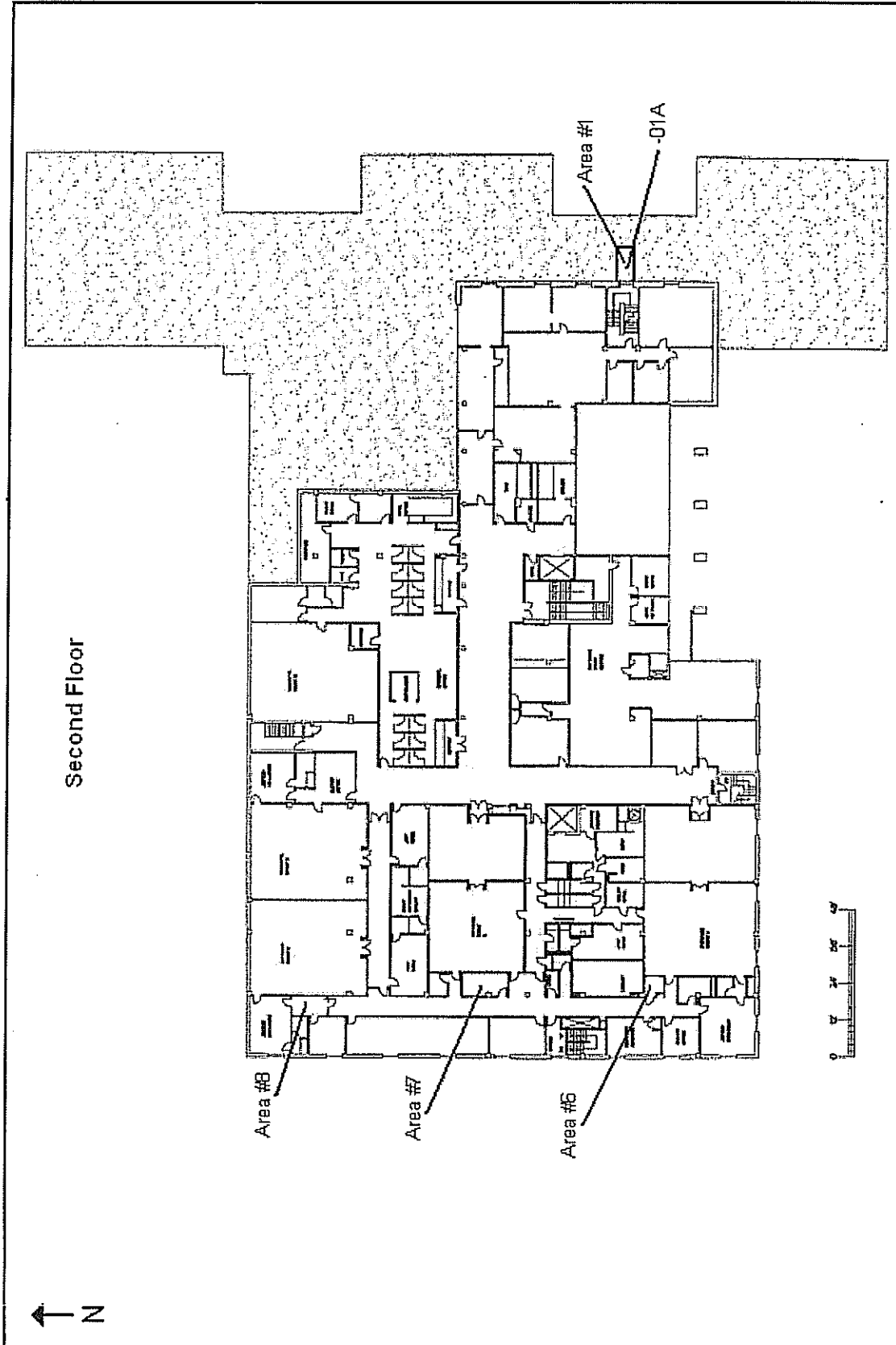
First Floor



County of Yuba
Yuba County Courthouse
215 5th Street
Marysville, CA 95901

Entek Consulting Group, Inc.
4200 Rocklin Road, Suite 7
Rocklin, California 95677
Project Number 08-1440

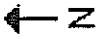
Areas 1-11 Inspected
by Douglas R. Colley on December 11, 2009
Map Not to Scale



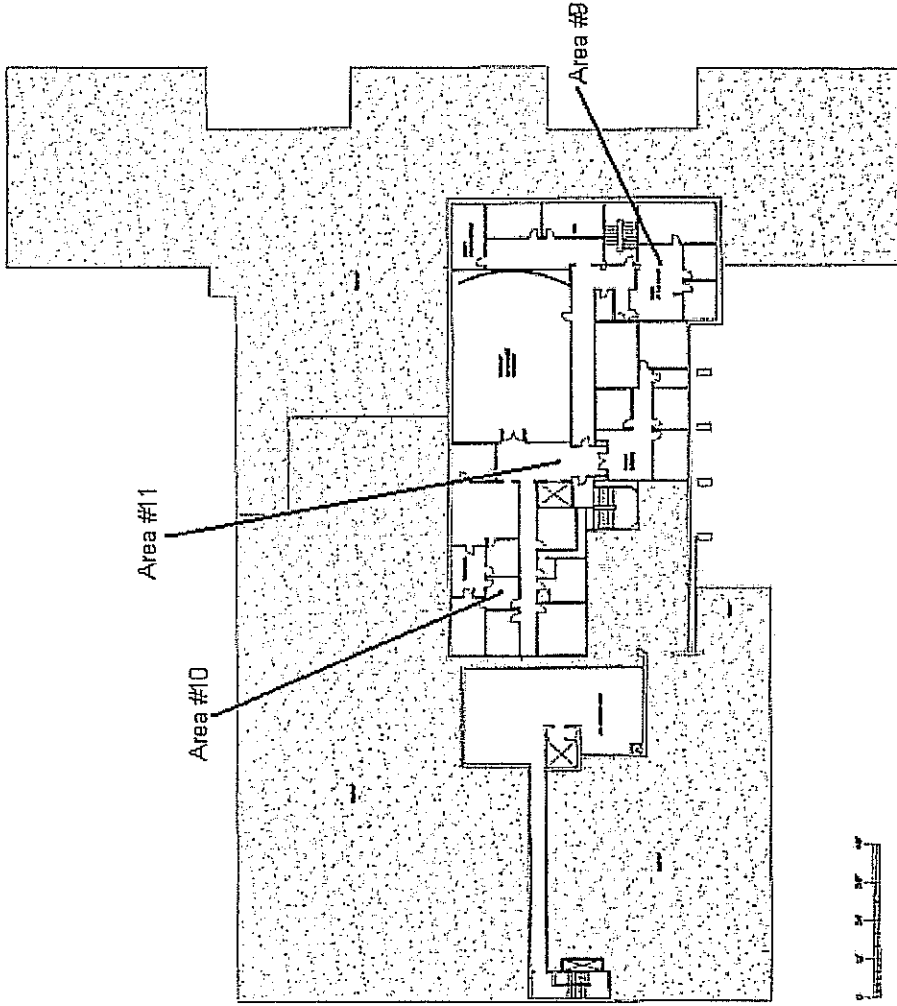
County of Yuba
 Yuba County Courthouse
 215 5th Street
 Marysville, CA 95901

Entek Consulting Group, Inc.
 4200 Rocklin Road, Suite 7
 Rocklin, California 95677
 Project Number 09-1440

Areas 1-11 Inspected and
 Asbestos Bulk Sample Collected
 by Douglas R. Colley on December 11, 2009
 Map Not to Scale



Third Floor



County of Yuba
Yuba County Courthouse
215 5th Street
Marysville, CA 95901

Entek Consulting Group, Inc.
4200 Rocklin Road, Suite 7
Rocklin, California 95677
Project Number 09-1440

Areas 1-11 Inspected
by Douglas R. Colley on December 11, 2009
Map Not to Scale