

LEGEND

ONE-HOUR RATED CORRIDOR ASSEMBLY

ONE-HOUR RATED SHAFT ASSEMBLY

MODULAR FURNITURE (LESS THAN 66" TALL)

LIGHTED EXIT SIGN PER CBC SECTION 1003.2.9  
 "TRIANGLE" INDICATES DIRECTION OF TRAVEL  
 SEE ELECTRICAL DRAWINGS FOR "EGRESS ILLUMINATION"  
 AND EMERGENCY LIGHTING REQUIREMENTS

OCCUPANT LOAD SIGN PER CBC SECTION 1007.2.6  
 SIGNS SHALL STATE: INDIVIDUAL OCCUPANT LOAD 34 MAX.  
 COMBINED OCCUPANT LOAD 66 MAX.

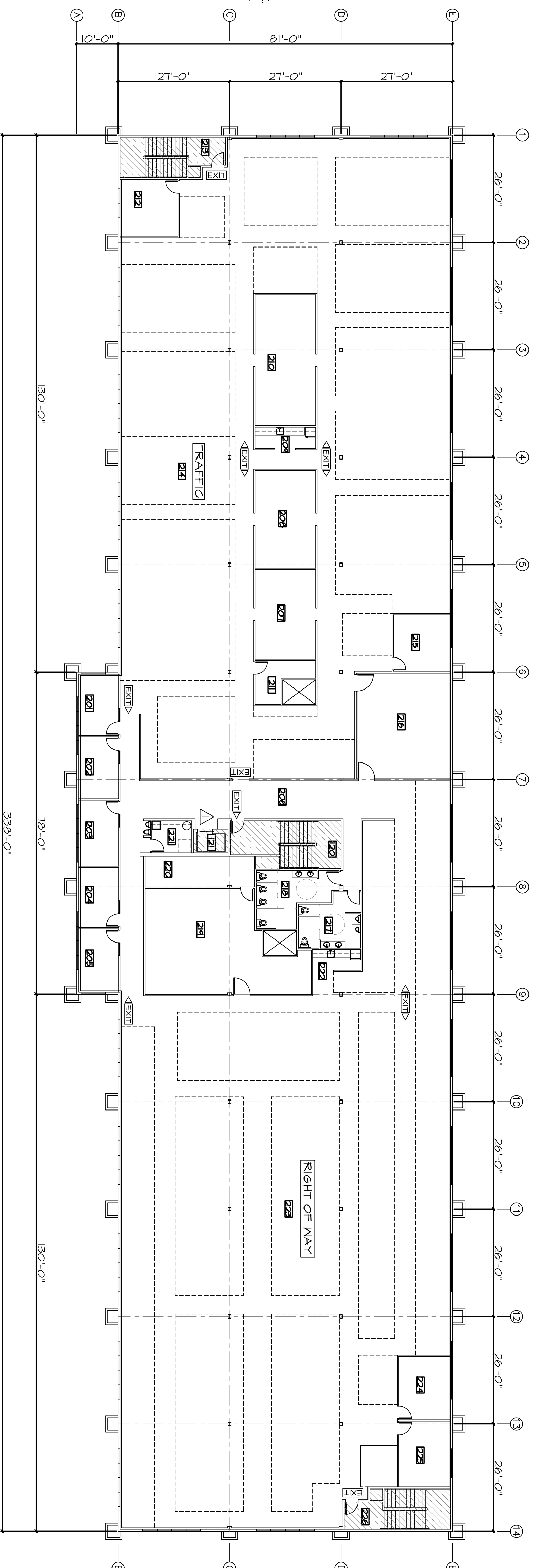
AS-BUILTS

ROOM SCHEDULE

ROOM NO.	DESCRIPTION	OCC. LOAD	COMMENTS
101	LOBBY	22	
102	RECEPTION	1	
103	MAIL ROOM	1	
104	CONFERENCE	34	
105	CONFERENCE	34	
106	MAINTENANCE	51	
107	CEA	2	
108	SUPPLY STORAGE	1	
109	SECURED STORAGE	1	
110	COMP. SETUP	2	
111	QUIET ROOM	2	
112	IDF	1	
113	KITCHENETTE	1	
114	CORRIDOR	N/A	ONE-HOUR RATED
115	MENS RESTROOM	2	
116	MENS LOCKER RM.	4	
117	JANITOR	1	
118	WOMENS RESTROOM	3	
119	WOMENS LOCKER RM.	5	
120	MAIN STAIR WELL	N/A	ONE-HOUR RATED
121	ELEVATOR	N/A	ONE-HOUR RATED SHAFT
122	ELEV. EQUIPMENT RM.	N/A	ONE-HOUR RATED
123	PERMITS	7	
124	QUIET ROOM	2	
125	QUIET ROOM	2	
126	REC./SUPPLY/COPIER	3	
127	BREAK ROOM	46	
128	SURVEYS	12	
129	FILE STORAGE	5	
130	OFFICE STORAGE	2	
131	OFFICE STORAGE	1	
132	SECURED STORAGE	1	
201	QUIET ROOM	2	
202	QUIET ROOM	2	
203	QUIET ROOM	2	
204	QUIET ROOM	2	
205	QUIET ROOM	2	
206	HALLWAY	N/A	
207	SUPPLY STORAGE	3	
208	PLOTTER	4	
209	KITCHENETTE	1	
210	RECORD STORAGE	5	
211	OFFICE	1	
212	CEA	2	
213	NORTH STAIR WELL	N/A	ONE-HOUR RATED
214	TRAFFIC	41	
215	CEA	2	
216	COMP. ROOM/NDP	6	
217	MENS RESTROOM	2	
218	WOMENS RESTROOM	2	
219	STORAGE	3	
220	SECURED STORAGE	1	
221	JANITOR	1	
222	KITCHENETTE	1	
223	RIGHT OF WAY	106	
224	SUPPLY	2	
225	CEA	2	
226	SOUTH STAIR WELL	N/A	ONE-HOUR RATED

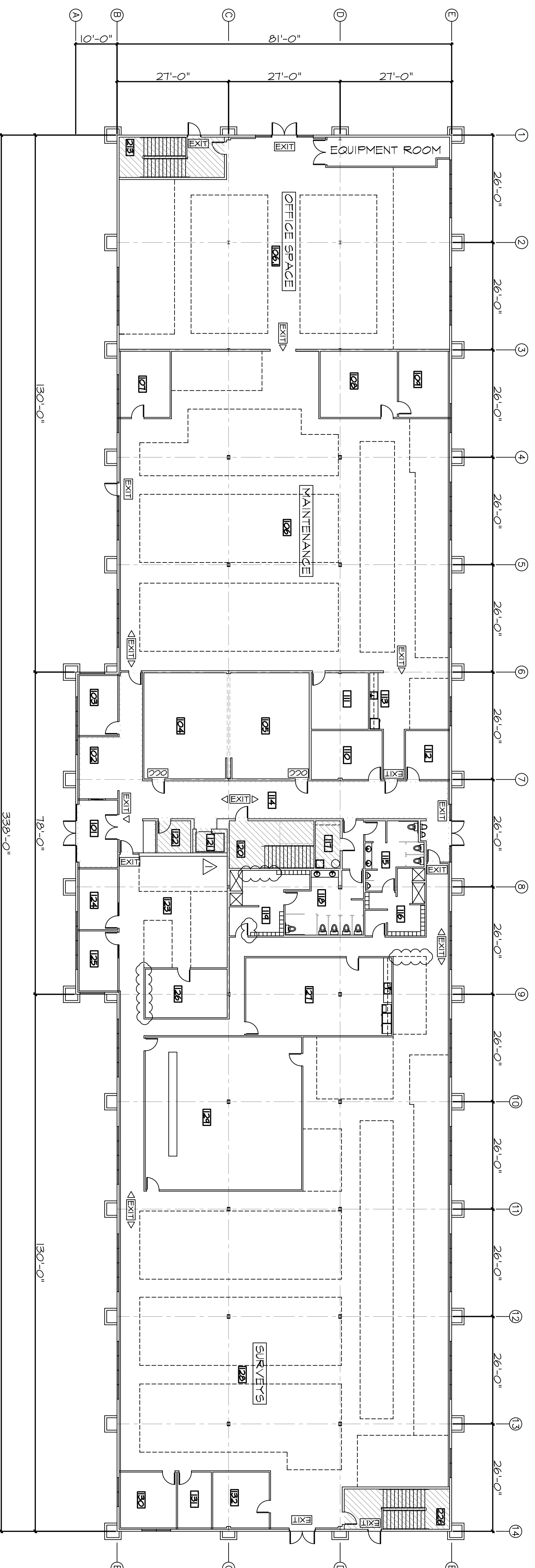
GENERAL NOTES

1. ALL INTERIOR "HARD SPACE" AREAS ARE SHOWN FOR PROJECT CLARITY. SEE SHEETS A21 THROUGH A24 FOR CONSTRUCTION DETAILS AND REFERENCES
2. SEE SEPARATE SPACE PLAN BY BRESCHI + PATTERSON, INC. FOR ACTUAL MODULAR FURNITURE/PARTITION LAYOUT
3. REFER TO SPACE PLAN FOR ELECTRICAL ASSOCIATED W/ MODULAR FURNITURE



SECOND FLOOR - OVERALL FLOOR AND EXIT PLAN

GROSS SECOND FLOOR AREA: 21,295 SQ.FT.  
 CALTRANS LEASE AREA: 26,103 SQ.FT.



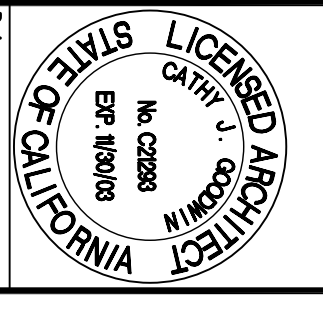
FIRST FLOOR - OVERALL FLOOR AND EXIT PLAN

GROSS FIRST FLOOR AREA: 29,158 SQ.FT.  
 CALTRANS LEASE SPACE: 26,603 SQ.FT.  
 TOTAL GROSS FLOOR AREA: 55,453 SQ.FT.  
 TOTAL CALTRANS LEASE AREA: 53,306 SQ.FT.

Revisions	Date	By
3/15/02	DN	
4/17/02	DN	
AS-BUILTS		
1/10/03	GS	

PROPOSED OFFICE COMPLEX FOR:  
 DEPARTMENT OF TRANSPORTATION  
 DISTRICT 3  
 720 YUBA STREET, MARYSVILLE, CA 95901

Designed by:  
**applegarth estrada**  
 GENERAL CONTRACTORS, INC.  
 1258 HASSETT AVENUE, NO. 10  
 YUBA CITY, CA 95991  
 Tel: (530) 751-7031 Fax: (530) 673-1267



Drawn: D. Nelson  
 Scale: 1/16"=1'-0"  
 Date: 1/7/02  
 Sheet: 01-324  
**A1.2**