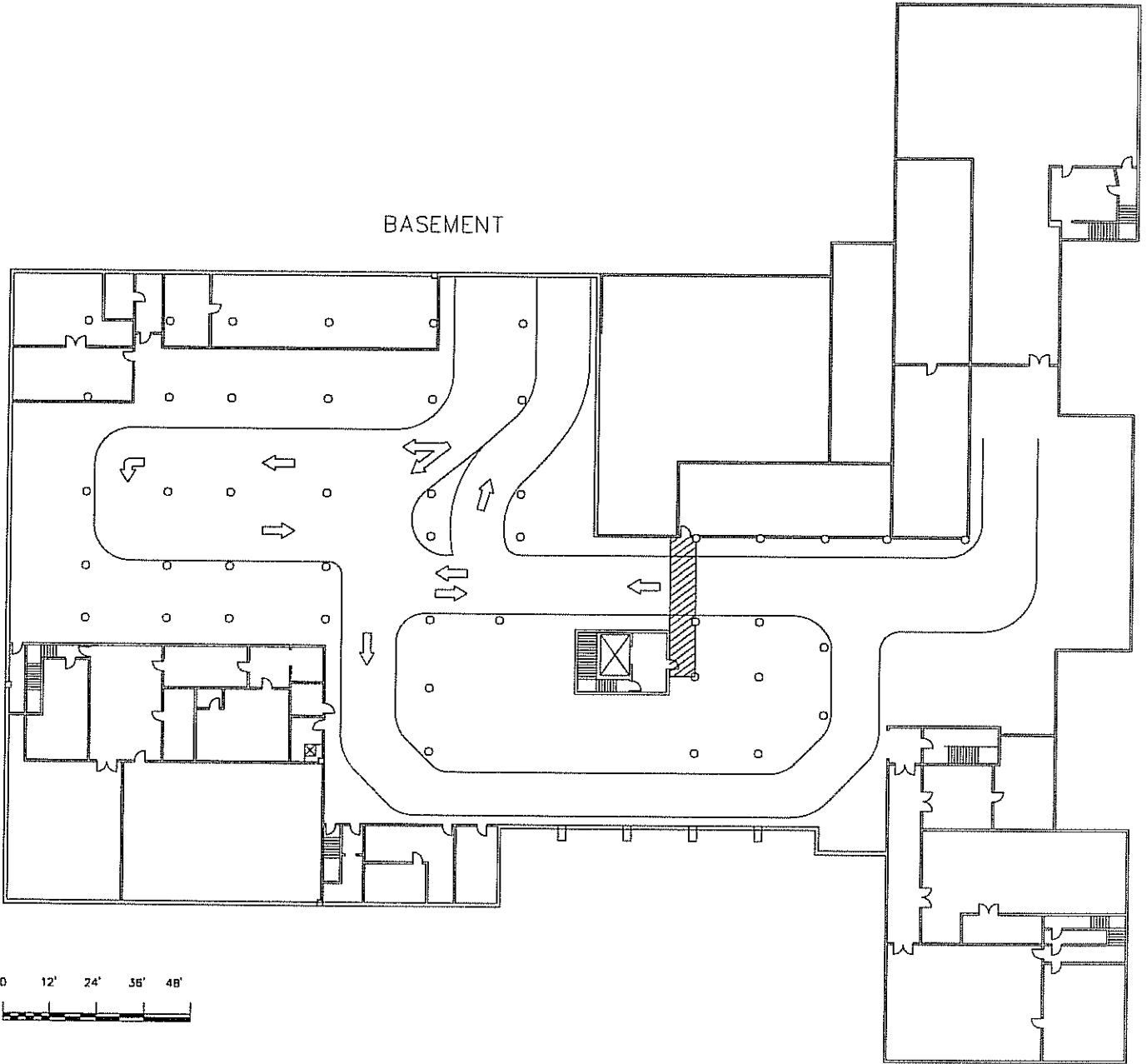


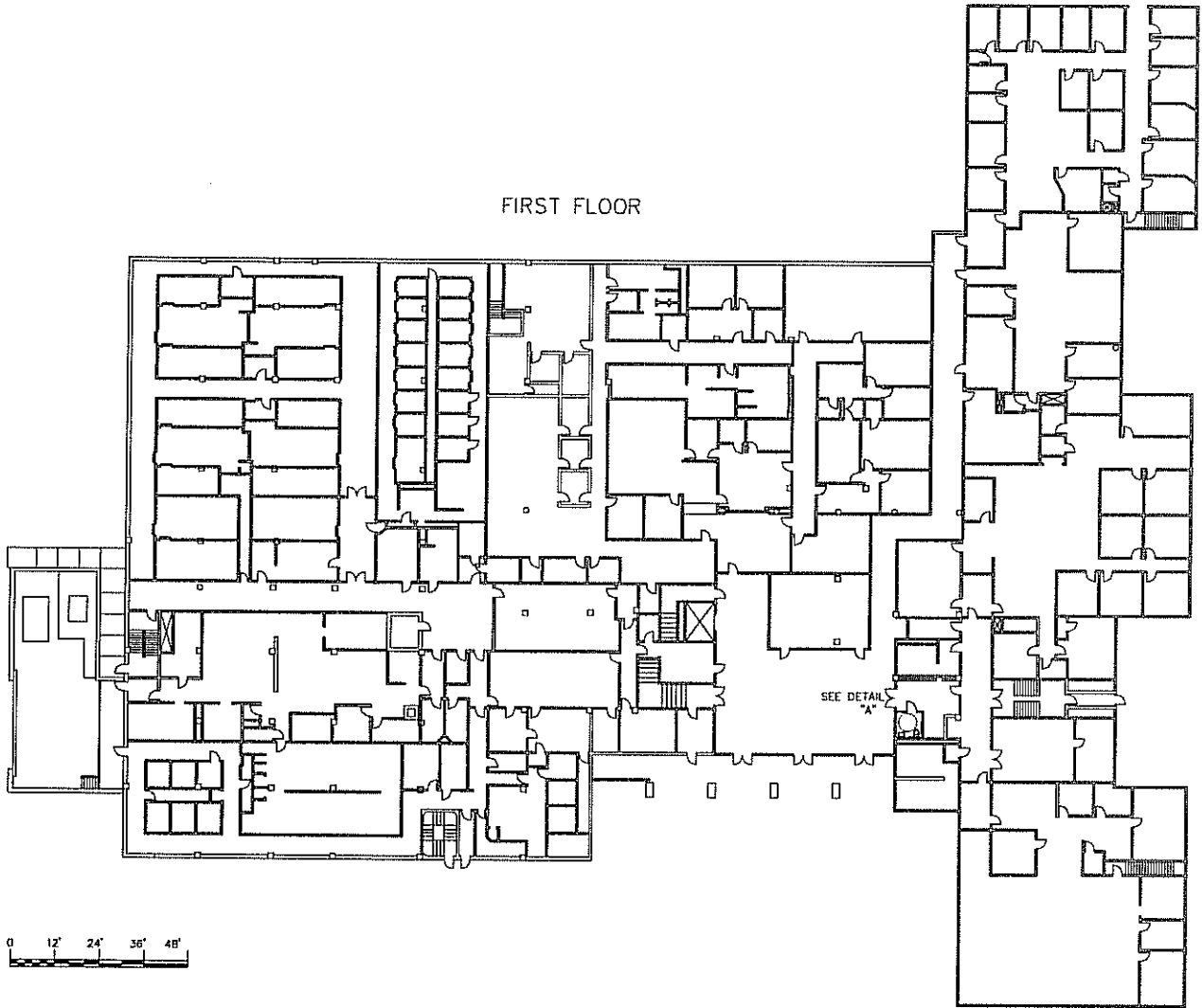
COURTHOUSE

BASEMENT



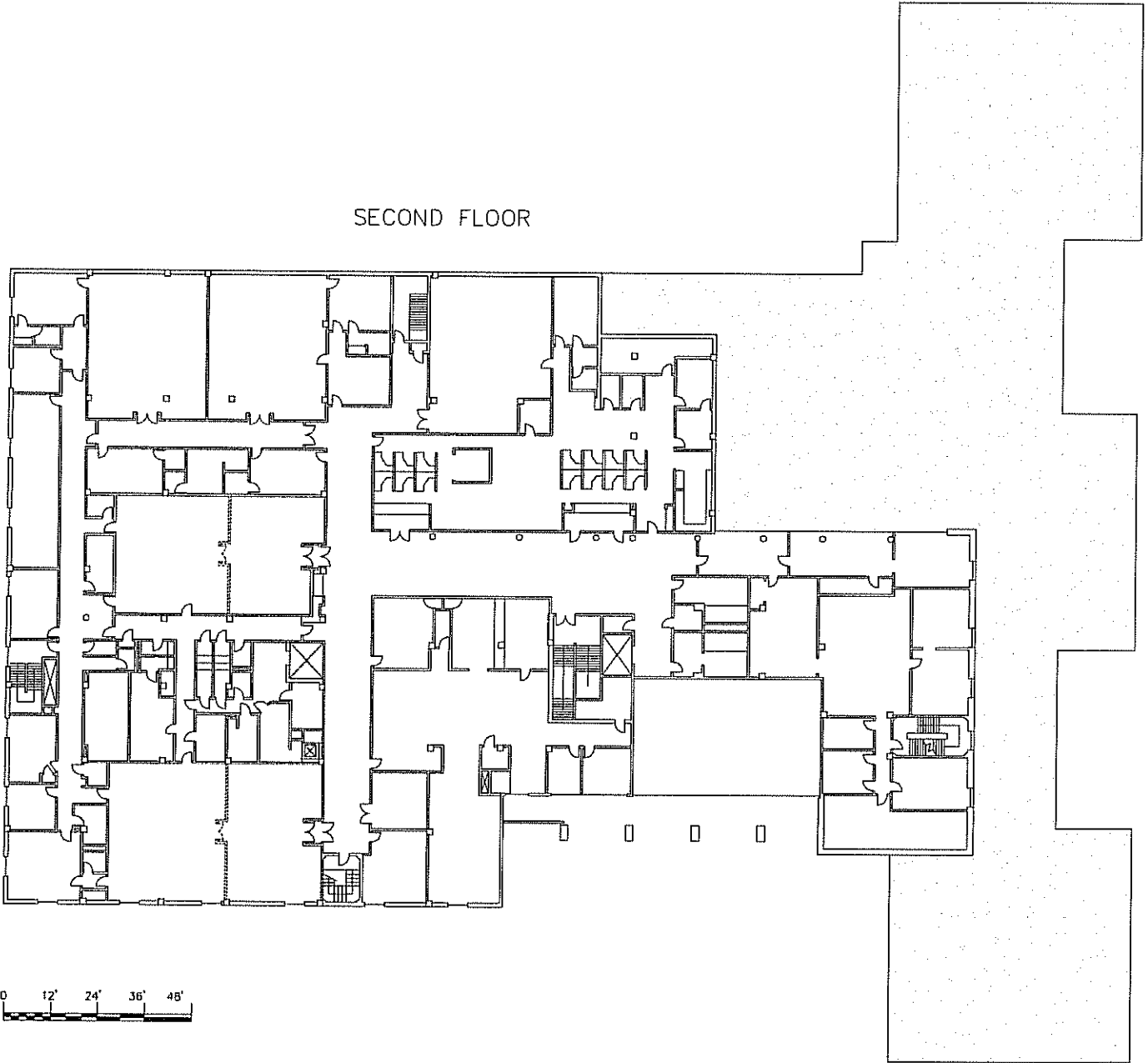
COURTHOUSE

FIRST FLOOR



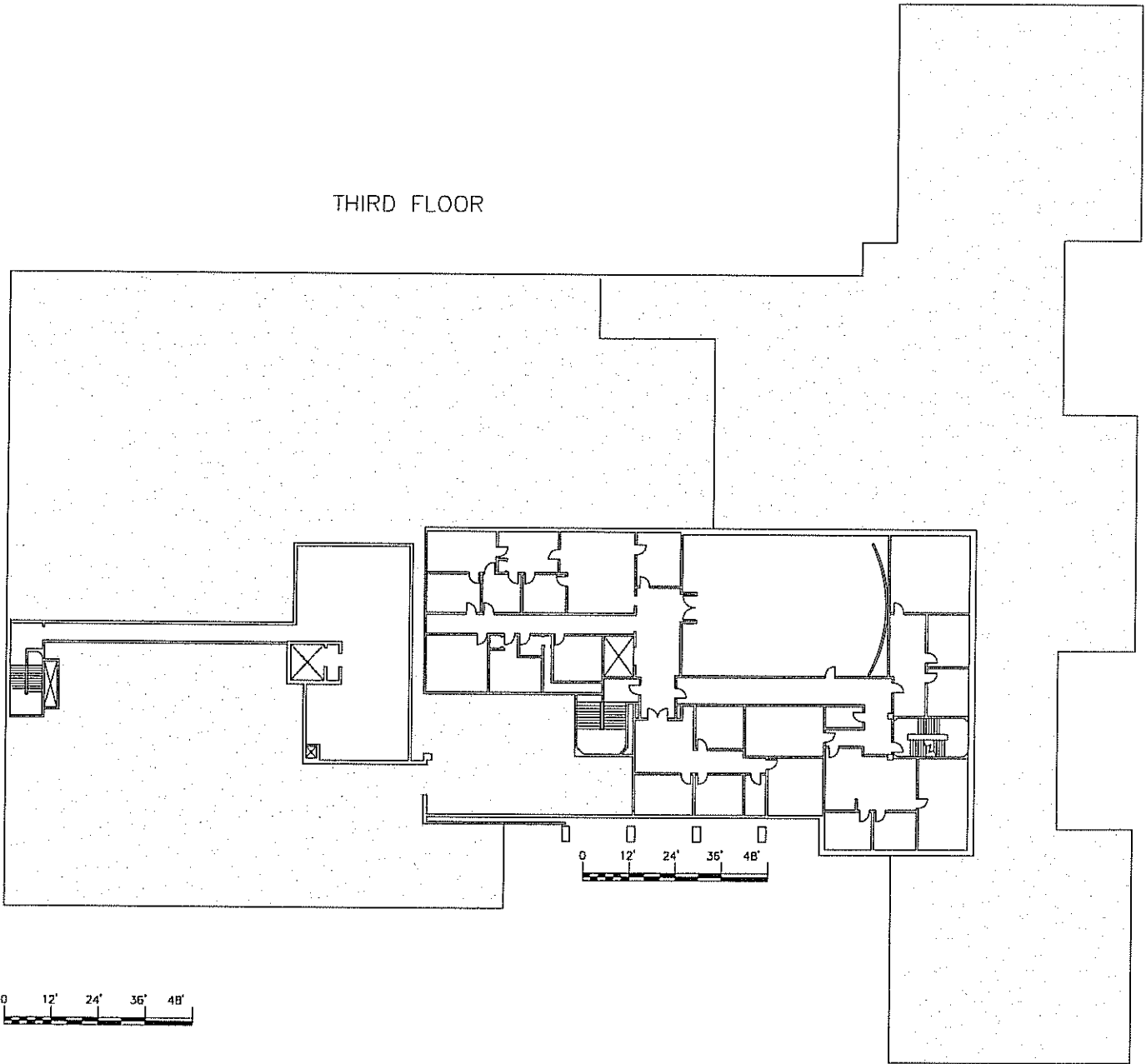
COURTHOUSE

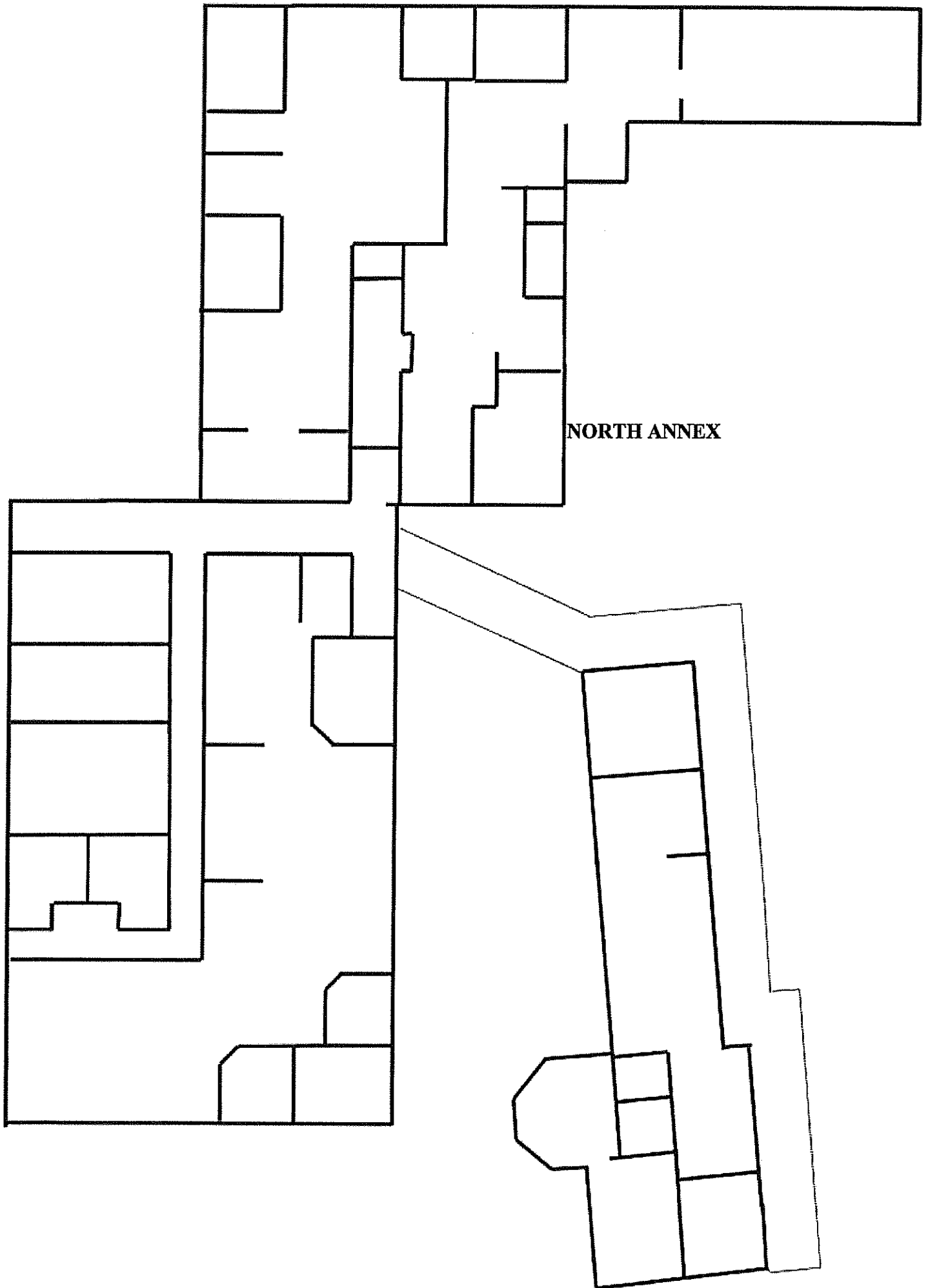
SECOND FLOOR



COURTHOUSE

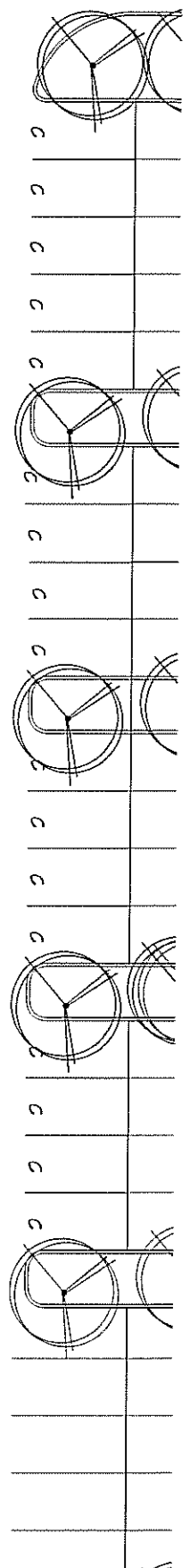
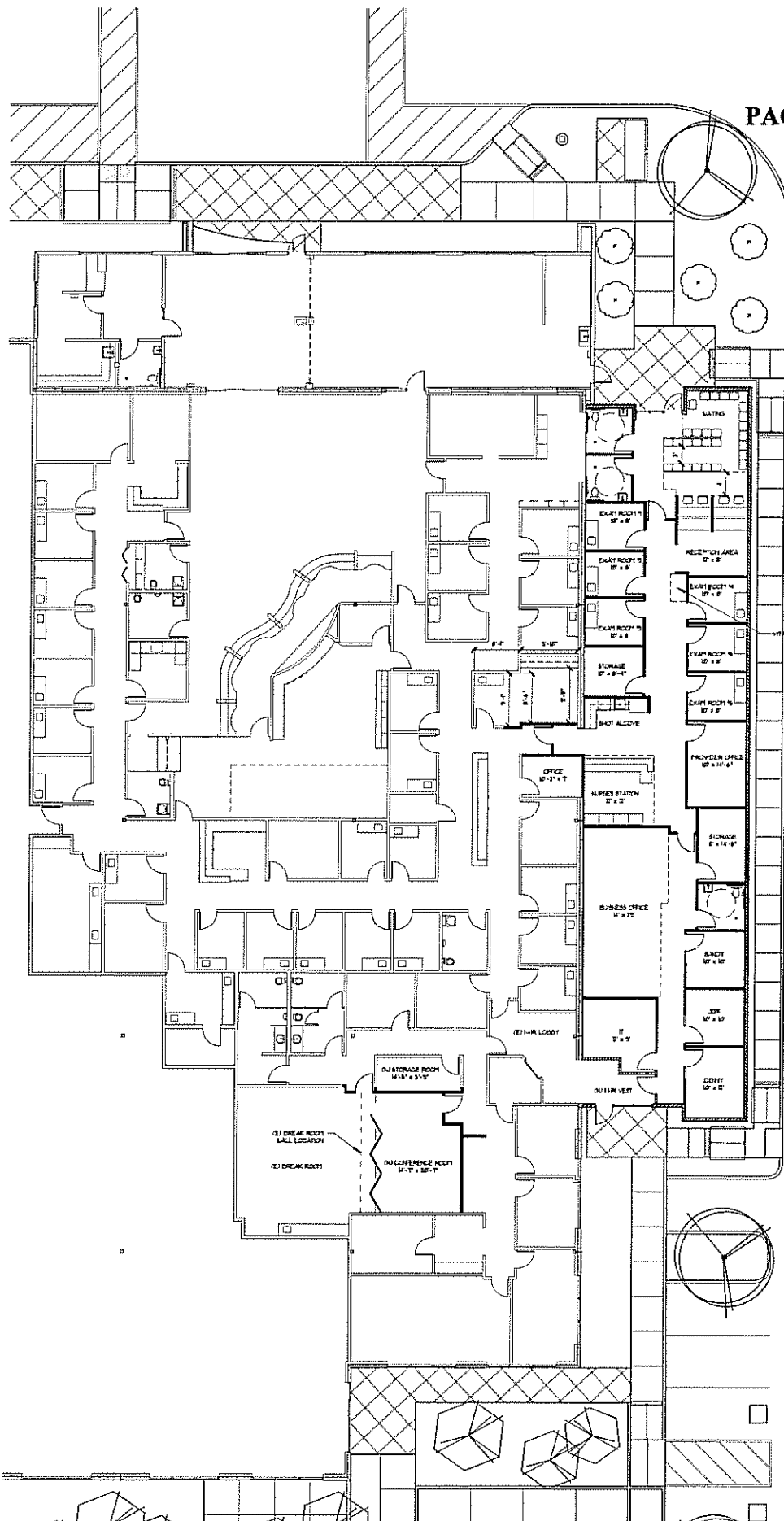
THIRD FLOOR





NORTH ANNEX

PACKARD

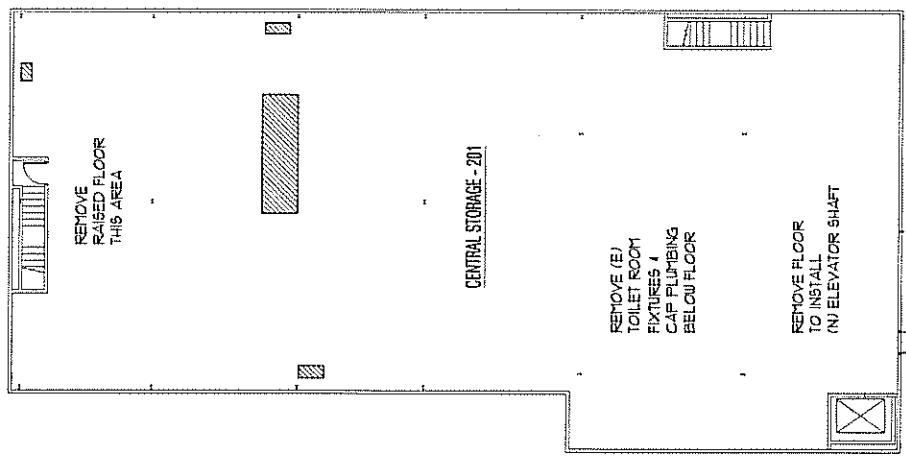
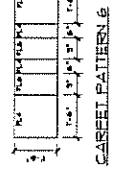


FINISH NOTES

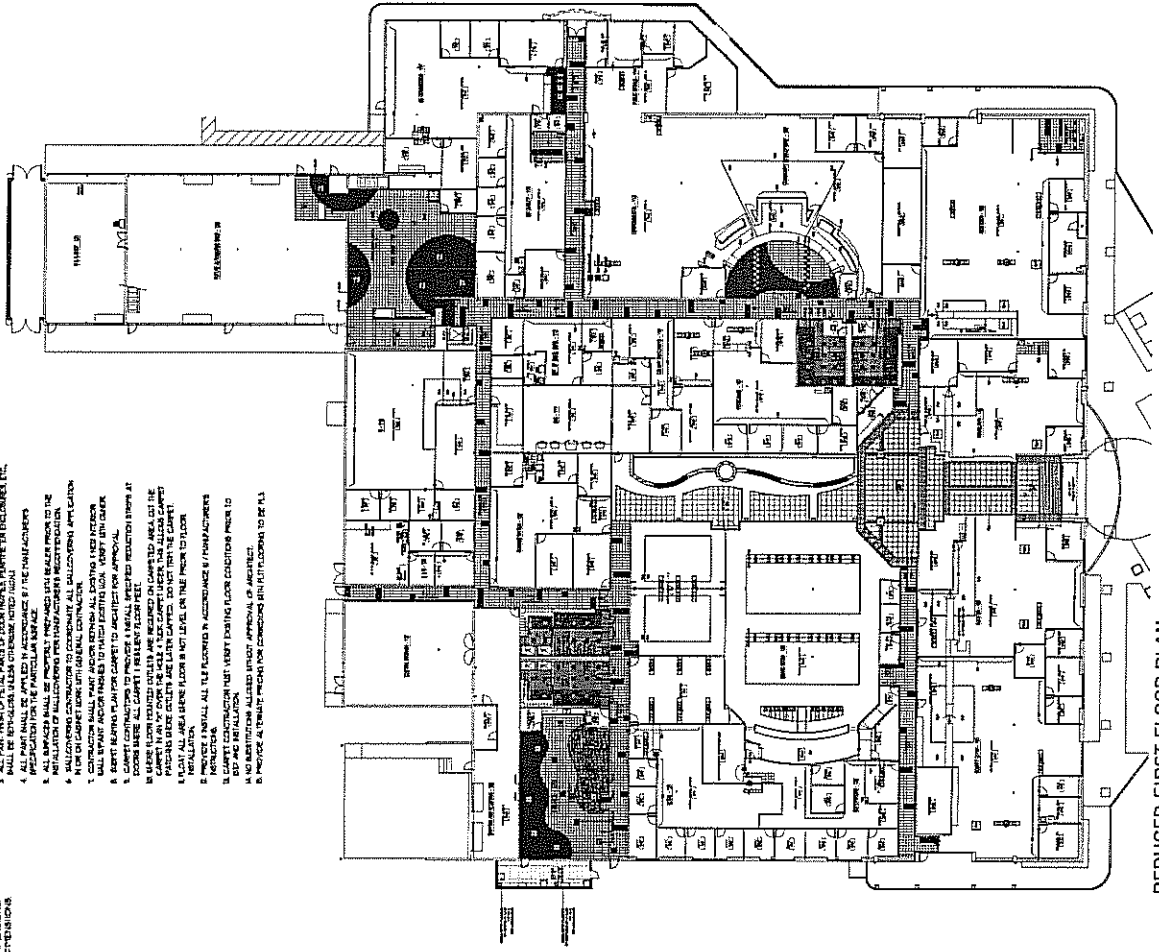
1. CONTRACTOR SHALL VERIFY ALL FINISHES ARE AS SHOWN ON DRAWINGS. VERIFY ALL FINISHES ARE AS SHOWN ON DRAWINGS. VERIFY ALL FINISHES ARE AS SHOWN ON DRAWINGS.
2. ALL FINISHES SHALL BE INSTALLED IN ACCORDANCE WITH THE MANUFACTURER'S INSTALLATION INSTRUCTIONS.
3. ALL FINISHES SHALL BE INSTALLED IN ACCORDANCE WITH THE MANUFACTURER'S INSTALLATION INSTRUCTIONS.
4. ALL FINISHES SHALL BE INSTALLED IN ACCORDANCE WITH THE MANUFACTURER'S INSTALLATION INSTRUCTIONS.
5. ALL FINISHES SHALL BE INSTALLED IN ACCORDANCE WITH THE MANUFACTURER'S INSTALLATION INSTRUCTIONS.
6. ALL FINISHES SHALL BE INSTALLED IN ACCORDANCE WITH THE MANUFACTURER'S INSTALLATION INSTRUCTIONS.
7. ALL FINISHES SHALL BE INSTALLED IN ACCORDANCE WITH THE MANUFACTURER'S INSTALLATION INSTRUCTIONS.
8. ALL FINISHES SHALL BE INSTALLED IN ACCORDANCE WITH THE MANUFACTURER'S INSTALLATION INSTRUCTIONS.
9. ALL FINISHES SHALL BE INSTALLED IN ACCORDANCE WITH THE MANUFACTURER'S INSTALLATION INSTRUCTIONS.
10. ALL FINISHES SHALL BE INSTALLED IN ACCORDANCE WITH THE MANUFACTURER'S INSTALLATION INSTRUCTIONS.

FLOOR PLAN KEYED NOTES:

1. REFER TO FINISH SCHEDULE FOR FINISHES AND ALL FINISHES.
2. REFER TO INTERIOR LAYOUT AND FINISH ELEVATION FOR WALL FINISHES.
3. REFER TO INTERIOR LAYOUT AND FINISH ELEVATION FOR WALL FINISHES.
4. REFER TO INTERIOR LAYOUT AND FINISH ELEVATION FOR WALL FINISHES.
5. REFER TO ENLARGED PATTERNS LAYOUT FOR DIMENSIONS.
6. REFER TO ENLARGED PATTERNS LAYOUT FOR DIMENSIONS.



② SECOND FLOOR FINISH PLAN



① REDUCED FIRST FLOOR PLAN

GOVERNMENT CENTER

Project:
YUBA COUNTY GOVERNMENT CENTER
 916 8TH STREET
 YUBA, CALIFORNIA

Sheet: D1.1

Revisions:

NO.	DATE	DESCRIPTION
1	7/23/03	PC COMMENTS
2	8/19/03	PC COMMENTS
3	9/28/03	RE-SUBMIT
4	11/14/03	PC RE-SUBMIT
5	1/16/04	DESIGN REVIEW
6	1/27/04	REVISIONS

D1.1

Scale: